

## **Supporting Information**

### **Pectin Coated Plasmonic Nanoparticles for Photodynamic Therapy:**

#### **Inspecting the Role of Serum Proteins**

José S. Cisneros<sup>1</sup>, Cecilia Y. Chain<sup>1\*</sup>, María B. Rivas Aiello<sup>1</sup>, Julieta Parisí<sup>2</sup>, Daniel C. Castrogiovanni<sup>2</sup>, Gabriela N. Bosio<sup>1</sup>, Daniel O. Mártire<sup>1</sup> and María E. Vela<sup>1</sup>

<sup>1</sup> Instituto de Investigaciones Fisicoquímicas Teóricas y Aplicadas (INIFTA- UNLP- CONICET), La Plata, Argentina

<sup>2</sup> Instituto Multidisciplinario de Biología Celular (IMBICE- CICPBA- CONICET- UNLP), La Plata, Argentina

[\\*yamil@inifta.unlp.edu.ar](mailto:*yamil@inifta.unlp.edu.ar)

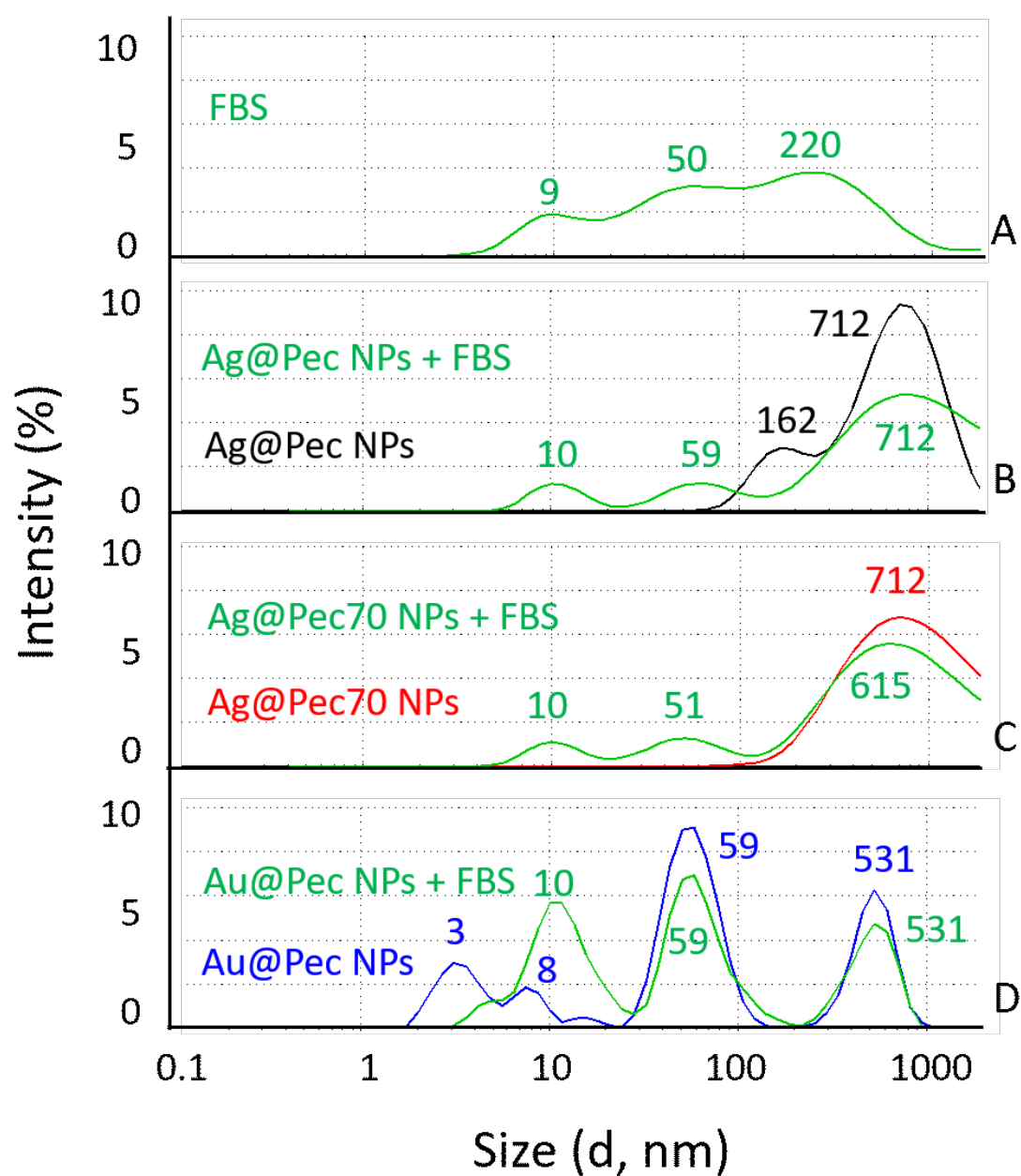
Number of pages: 4

Number of figures: 3

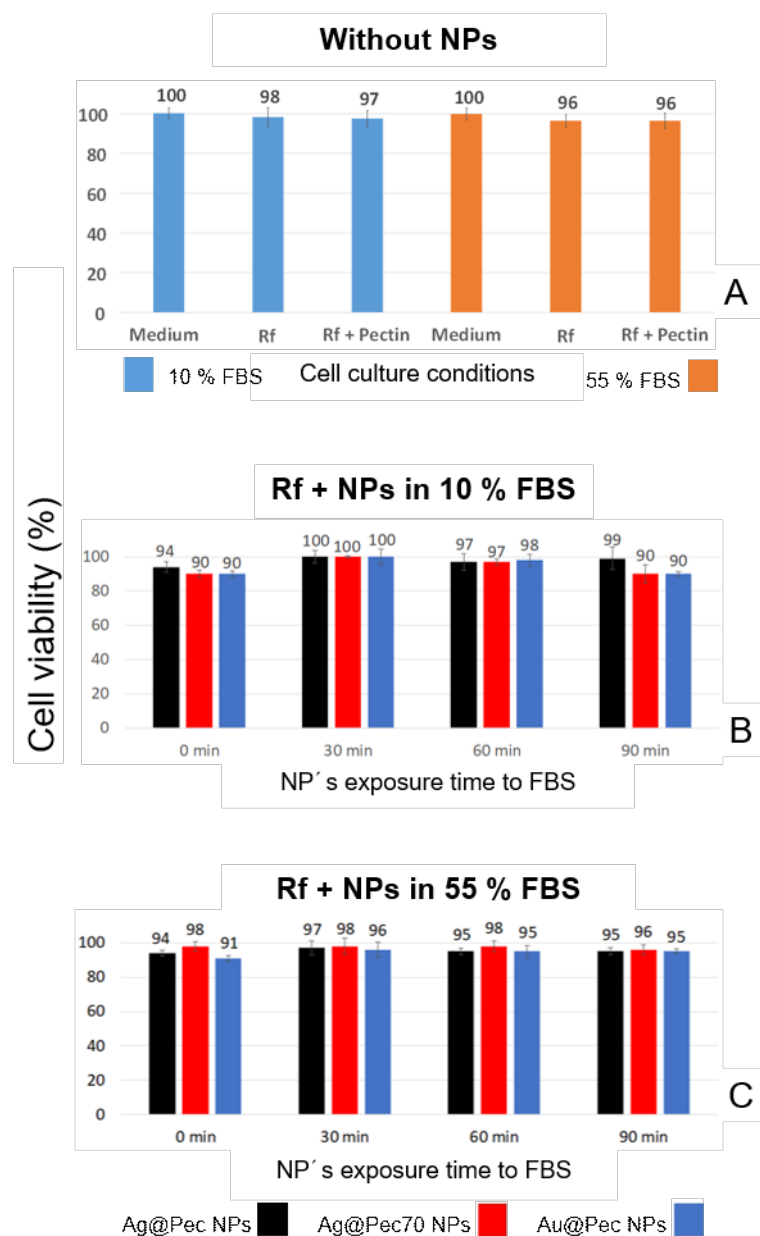
Number of tables: 0

#### **Contents:**

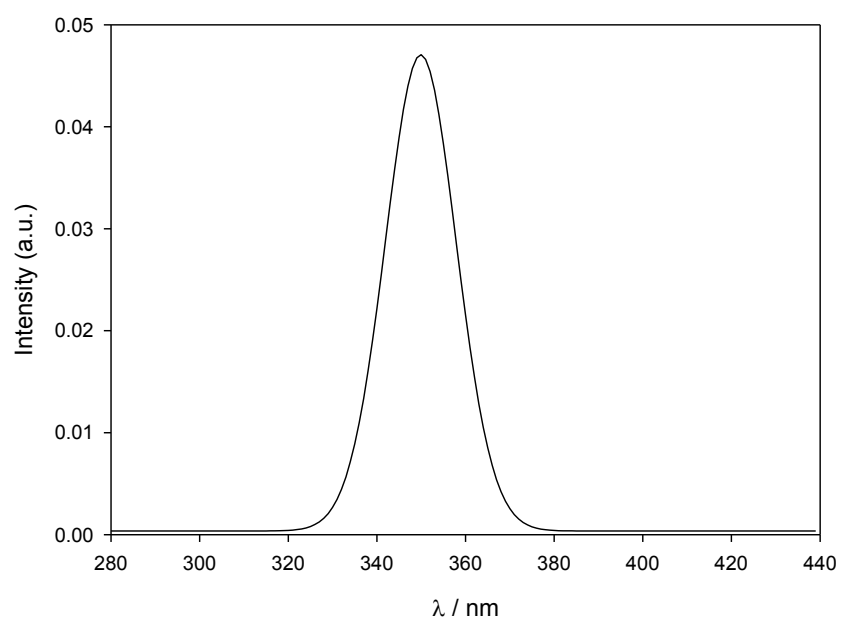
Figure S1: Size distribution by intensity obtained by DLS for Me@Pec NPs in the presence and in the absence of FBS.....	S2
Figure S2: Results of MTT assays on non- irradiated HeLa cells.....	S3
Figure S3: Emission spectrum of the 8 RPR-3500 A lamps .....	S4



**Figure S1:** Size distribution by intensity obtained by DLS for (A) FBS, (B) Ag@Pec NPs and Ag@Pec NPs +FBS, (C) Ag@Pec70 NPs and Ag@Pec70 NPs +FBS and (D) Au@Pec NPs and Au@Pec NPs +FBS.



**Figure S2:** Bar graphs showing the results of the MTT assays on **non- irradiated** HeLa cells incubated in (A) 10 % (light blue) or 55% (orange) FBS- supplemented MEM in the presence of Rf or Rf + pectin, **without** NPs and in (B) 10 % FBS or (C) 55 % FBS-supplemented MEM that contained **Rf + Me@Pec NPs** (Ag@Pec NPs -black-, Ag@Pec70 NPs -red- or Au@Pec NPs -blue-) that had been exposed to the culture medium 0, 30, 60 or 90 minutes before. All data are presented as mean  $\pm$  SE from 4-8 independent experiments



**Figure S3.** Emission spectrum of the 8 RPR-3500 A lamps with emission centered at 350 nm.